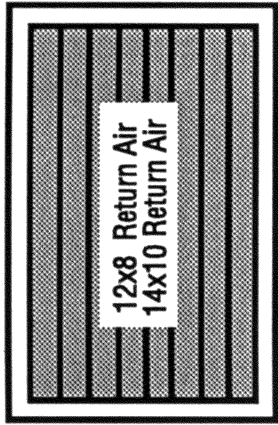
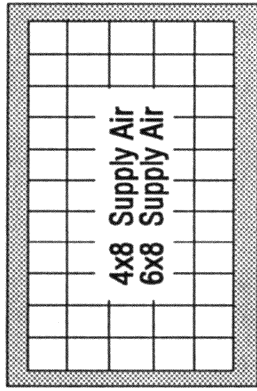


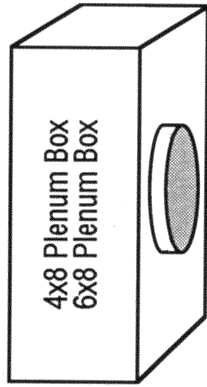
Various ducting adaptations may be used. Below is simply a general guide for your consideration.



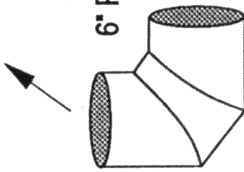
Grilles - Aluminum



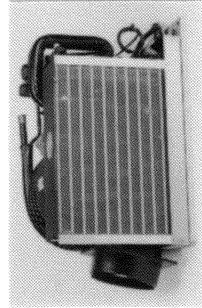
For the classic look, add elegance to your living space with handsome, beautifully-crafted wood-framed grilles in teak.



(Note: Plenum Box is required for all Rectangular grilles)



6" Round Elbow Washable return air filter

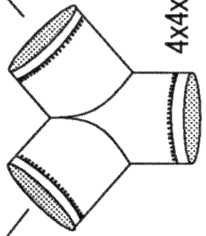


Return Air

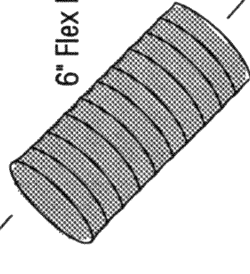
Left-side or optional Right-side Blower discharge.



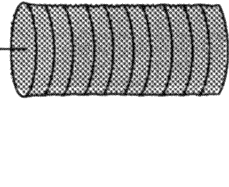
Air Supply 4" Round



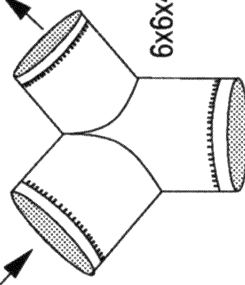
4x4x4 Metal Y



6" Flex Duct



4" Flex Duct



6x6x4 Metal Y

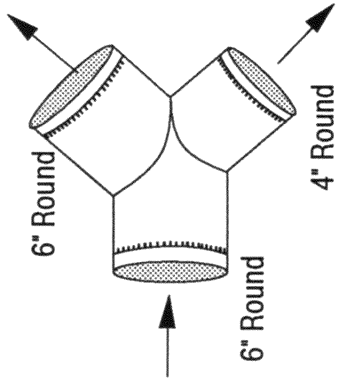
Choice of Styles

In most cases, the grilles and control panel are all that you see of your installed air conditioner. That's why we offer a variety of grilles to blend with your interior

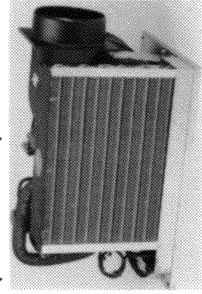
For the "hi-tech" look, round plastic supply grilles are available in brown, tan, white and black.

FIGURE 1
TYPICAL SUPPLY AND RETURN DUCT ROUTING

Air Supply

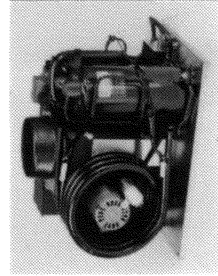


Electric Box Remote Mounted (not shown)



Side Discharge Model is often used with the Unit under a bunk or dinette seat.

Air Supply



Top Discharge Model

FIGURE 2
OPERATIONAL
DIAGRAM

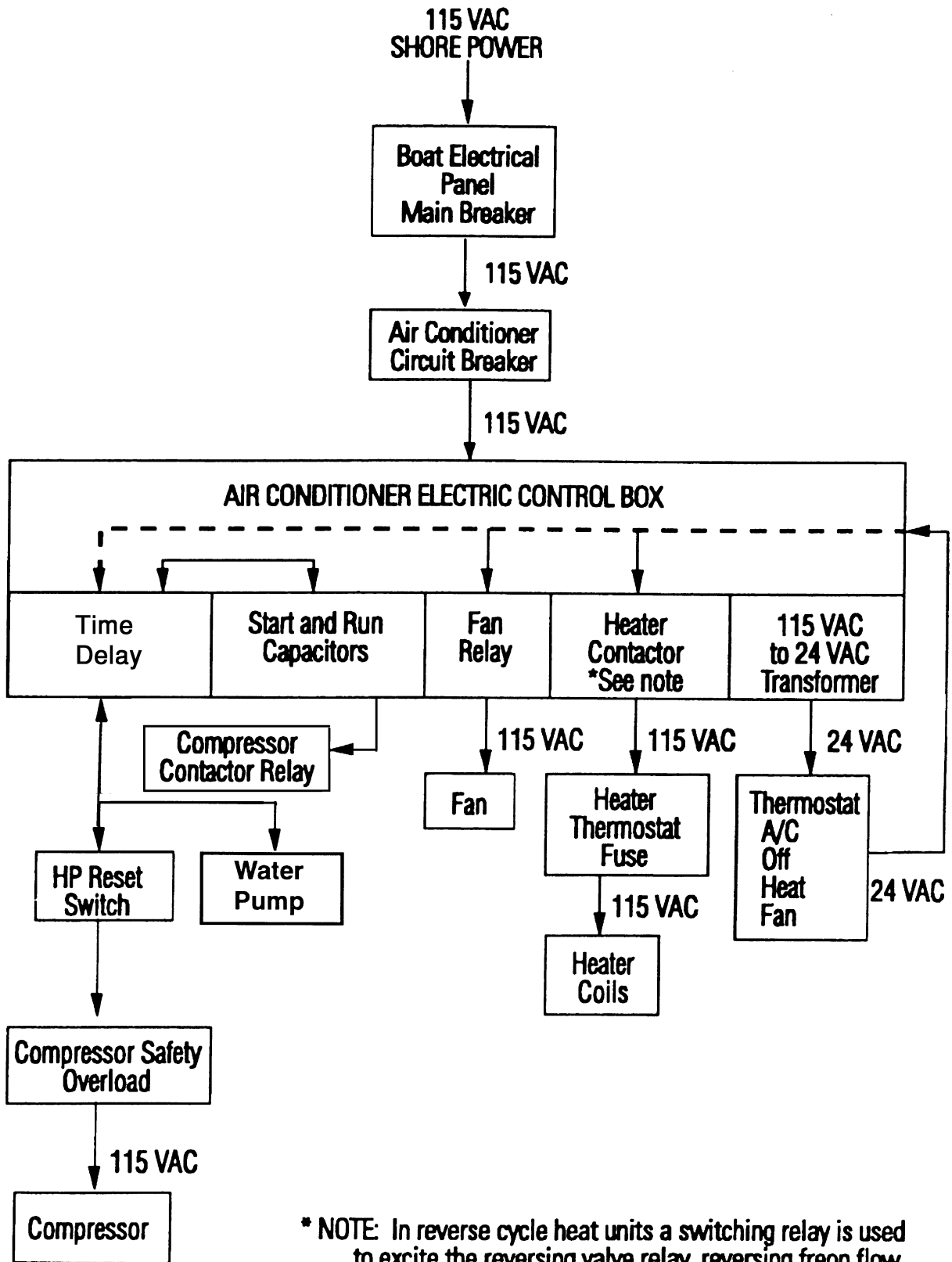


FIGURE 3
TYPICAL
INSTALLATION

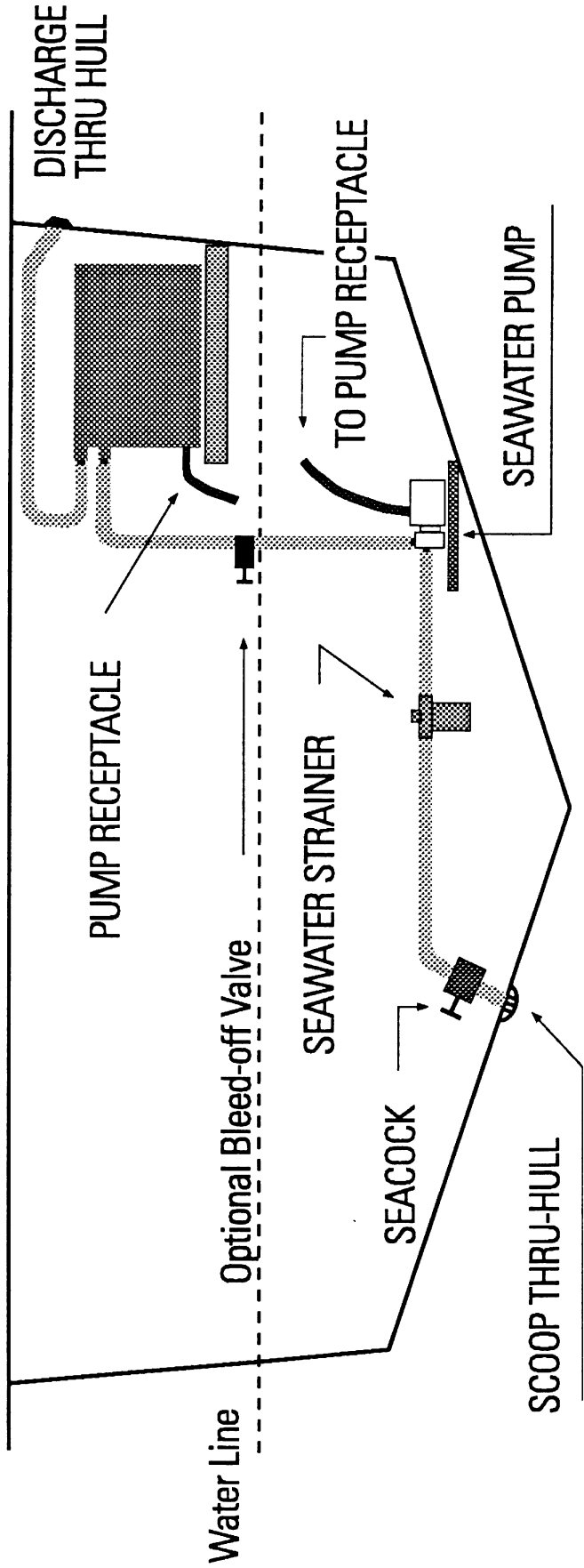


FIGURE 4a

**WIRING DIAGRAM
COOL ONLY
(All Models)**

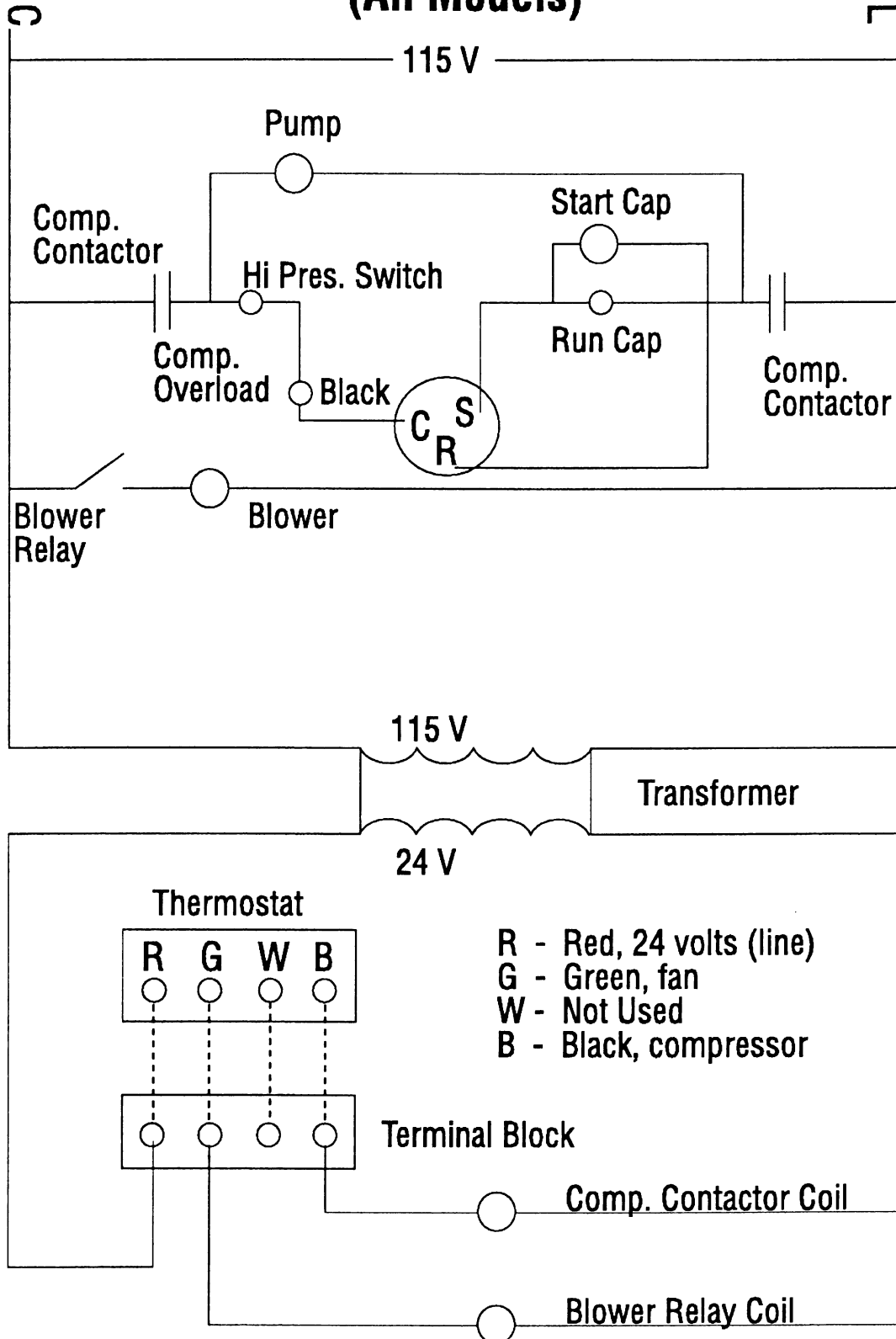


FIGURE 4b

**WIRING DIAGRAM
ELECTRIC HEAT & COOL
(Models M-6, M-9, and M-12 only)**

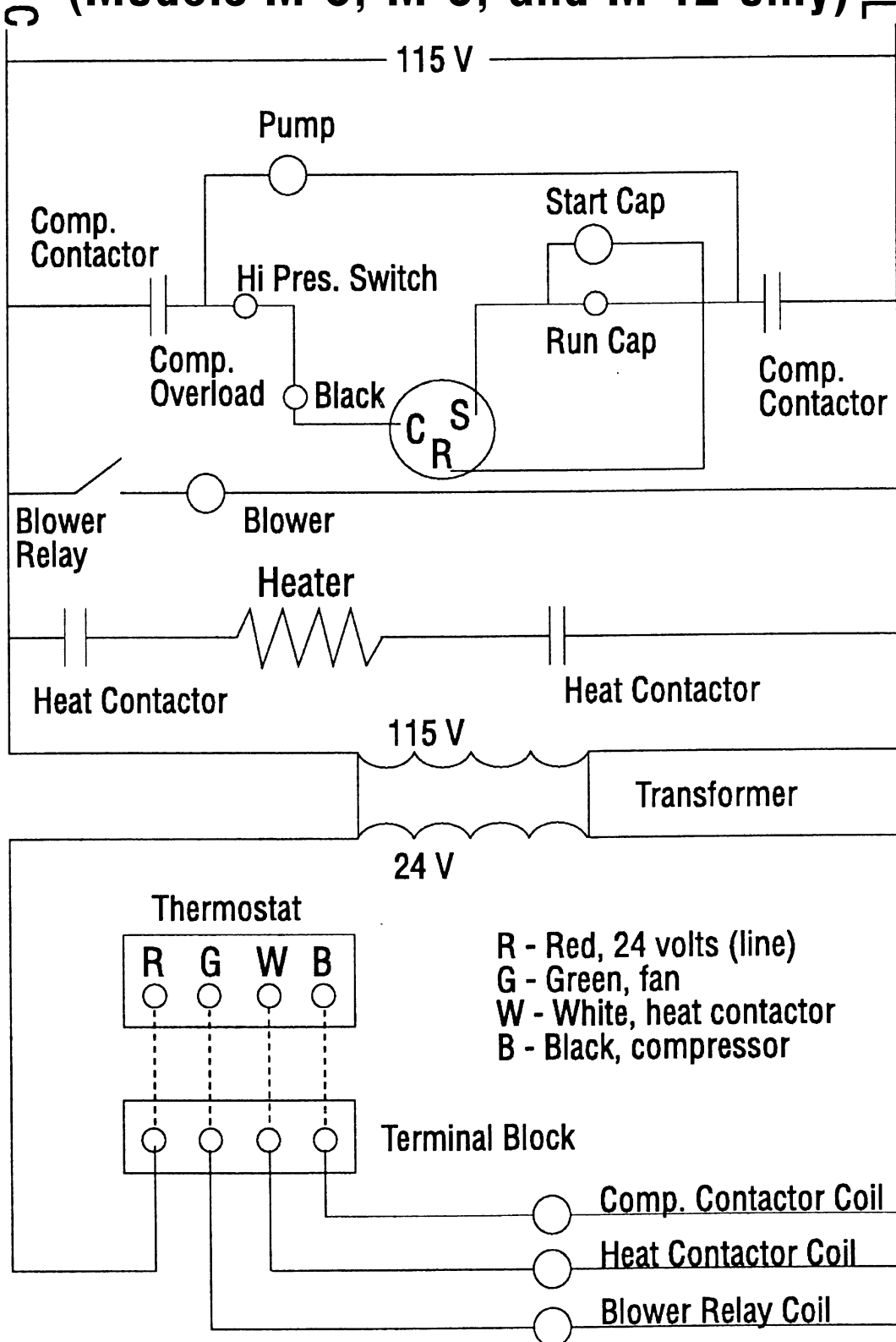


FIGURE 4c

**WIRING DIAGRAM
REVERSE CYCLE HEAT & COOL
(All Models)**

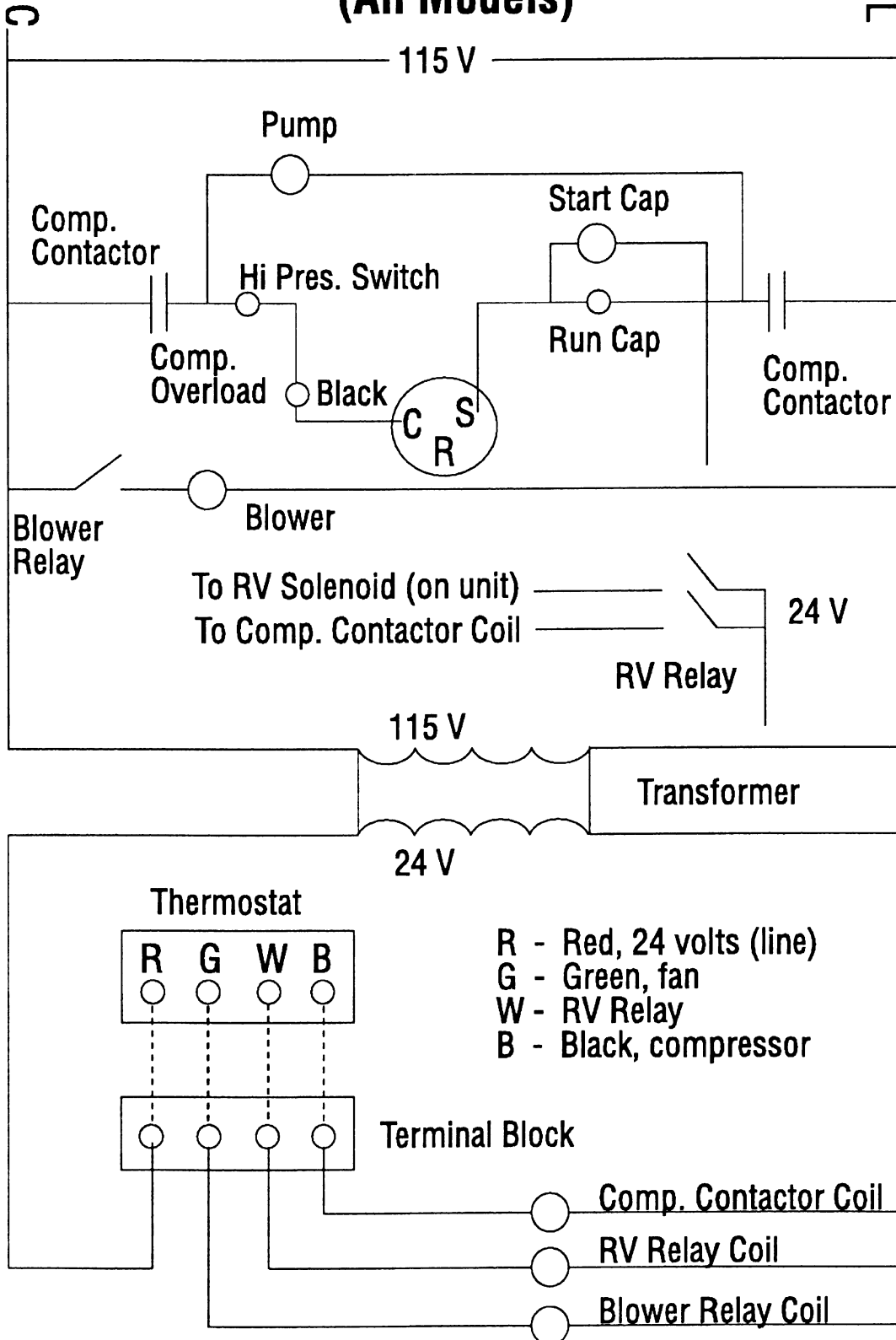


FIGURE 5
BLEED OFF
VALVE DIAGRAM

