

SALTO GEO Cylinder | the next generation of electronic cylinder lock

Fully integrated with the SALTO XS4 platform, GEO is a versatile, cost effective solution and its compact size and easy installation makes it the ideal electronic locking system for cabinets...

Cam Lock cylinder - GxCL



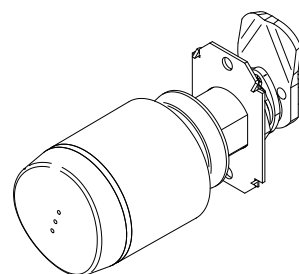
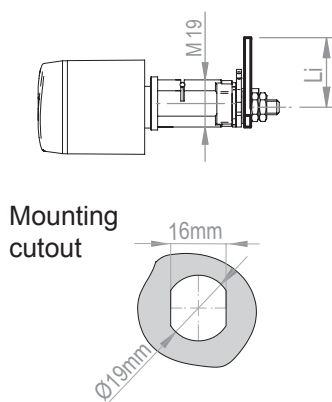
AVAILABLE



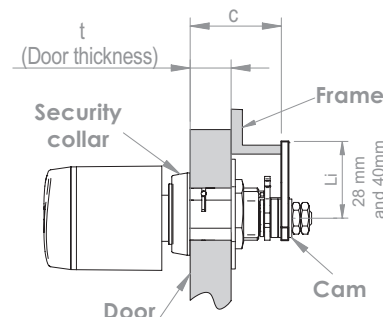
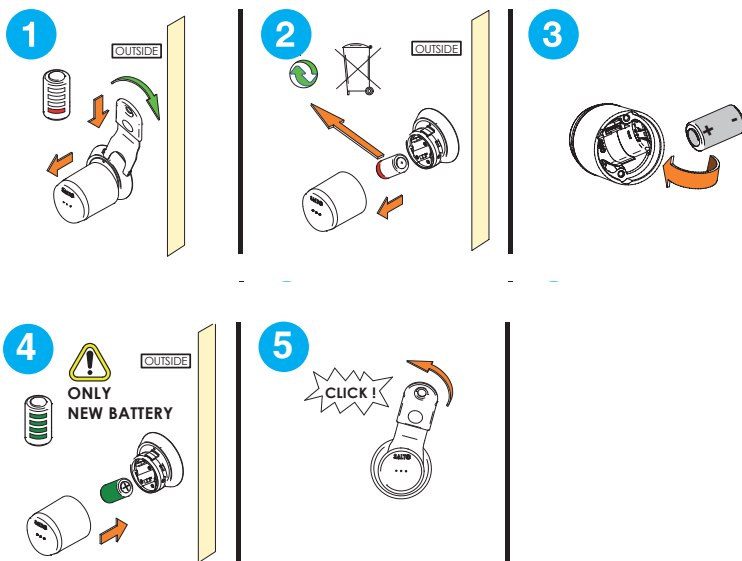
SALTO GEO Electronic Cylinder Cam Lock Cylinder

The SALTO GEO cam lock cylinder is specially designed to fit most cabinets equipped with a cam locking mechanisms like cabinets, cupboards...

A wire free fully stand alone electronic access control solution, it provides a high technology and cost effective system and is ideal for use on applications where enhanced control and security.



BATTERY CHANGE



Available lock modes:



- **Standard:** locked at all times.
- **Automatic opening:** 8 pairs of “hands free” timed lock and unlocks per day with holidays.
- **Toggle:** present card to lock, present card to unlock.
- **Time toggle:** present card to lock, present card to unlock depending on schedules.

SALTO GEO Electronic Cylinder Cam Lock cylinder

Main features and benefits



- Fully integrated with the SALTO XS4 platform.
- Virtual network capable through SALTO Virtual Network technology.
- ID credentials: iButton, Mifare, DESFire, LEGIC Advant and HID iCLASS
- NFC compatible on contactless versions*.
- All communications between the carrier and the GEO cylinder are encrypted and secure.
- Optical signalling. Dual colour light ring green/ red to indicate access authorization.
- Acoustic signalling.
- Optional, torx screw to tighten the knob and convert the cylinder to a fix knob cylinder.
- Available in 6 different finishes
- High security via high resistance, hardened anti-drill protection.
- Concealed fixing screws for greater security and improved aesthetics.
- Emergency opening by means of portable programming device (PPD).
- Body diameter of 19mm.
- Available for lengths from 29 mm (door thickness 1mm to 15mm) and 47mm (door thickness 15mm to 22mm).
- Different cams lengths: 28mm. or 40mm.



Cam, adjustments and fine

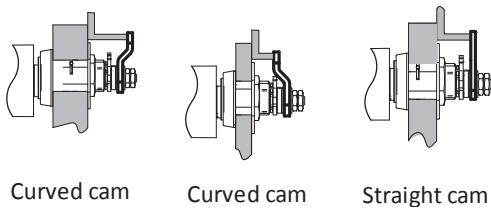


SALTO Geo cam lock cylinder GxCLxxx has been developed in order to cover the majority of the situation. Just by adapting the set up of the components, this electronic cylinder can be fitted in the majority of the cabinets, cupboards, mailboxes etc.

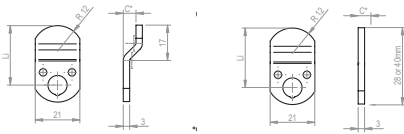
The cylinder includes 2 different cams to meet a flexible range of "C" distances. just by combining the appropriate cam with the adjustable washers, you can easily adapt your cylinder to the installation existing hardware.

Use "C" distance compatibility for M or W cylinder on those situations where the distance C from the outside of the door to the strike go:

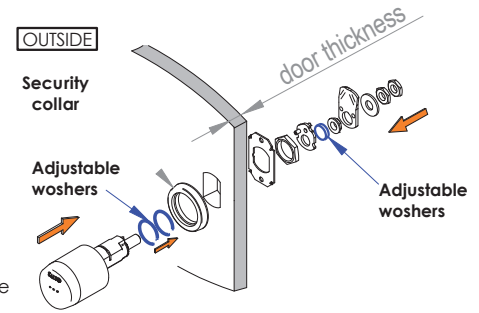
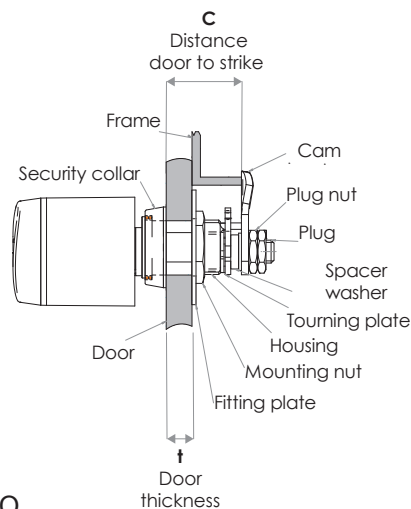
- 7/8" up to 1-9/16" with the M model with one of the 2 cams provided.
- 1-1/8" up to 1-7/8" with the W model with one of the 2 cams provided.



Standard cams available:
1-1/8" or 1-9/16" lenght (Li)



Custom made cams can be manufactured
For more information please consult SALTO



Access Control Features



	Selfprogrammable System	ROM System	R&W System
Maximum number of users per door	1000	1000	4000000
Maximum number of doors per system	1000	16000	64000
Maximum events on lock audit	1000	1000	1000
Time zones	1000	30	256
Time periods	1000	20	256
Calendars in system	1000	4	256
User groups	1000	unlimited	unlimited
Zones in system	1000	unlimited	unlimited
Management software	Programing key & user key sets	ProAccess ROM	ProAccess HAMS (available SQL)

ID technologies

**MIFARE DESFire****NFC**

Range of RFID credential / keys available



Contact less key cards



Contact less fobs



Contact less bracelets



NFC phones

MIFARE DESFire

**MIFARE DESFire**

Mifare RFID contactless technology reads & writes information to contactless smart cards (RFID) compatible with ISO 14.443A, ISO 14.443B and ISO 15.693 standards, and as Mifare, Mifare plus, DESFire, DESFireEV1 technologies. They also allow for updating of the carriers via SALTO Virtual Net (SVN) technology.

- 13.56MHz contactless RFID identification.
- ISO 14.443A, ISO 14.443B and ISO 15.693, Mifare, DESFire Compatible.
- Near Field Communication (NFC) compatible.
- Key card available: 1Kbyte, 4Kbytes and 8 Kbytes depending on technology.
- Key shape available: ISO 7810 Cards, fobs, bracelets, stickers, watches...
- Reusable key cards.
- SALTO Virtual Network (SVN) compatible*.
- RFID technology, there's a contactless exchange of information between the card and the reader*.
- High security encrypted Proximity cards.
- Multiapplication with other systems using the same card with different sectors.
- Customized issuing card through the SALTO Authorization Media software (SAM).
- Waterproof cards which can be customized.
- Upgradable: selfprogrammable, ROM, R&W systems available using the same hardware.

* depending on the programming mode

HID iCLASS®



iCLASS® contactless technology from HID is R&W identification technology based on 13.56 MHz read/write contactless smart card technology. iCLASS® offers enhanced security through encryption. This single-card, contactless solution permits multiapplication with others systems, and with the SVN capabilities, you will acquire a lot of interesting new features for your property access control.

- 13.56MHz contactless RFID identification.
- ISO 14.443B2 standard compliant. ISO 15.693 standard compliant.
- Reusable key cards.
- SALTO Virtual Network (SVN) compatible.
- Read & Write technology, there's a contact less exchange of information between the card and the reader.
- High security, by using password and encrypted Proximity cards.
- Multiapplication with other systems using the same card through shared pages.
- Customized issuing card through the SALTO Authorization Media software (SAM).
- Waterproof cards which can be customized.
- Upgradable: ROM, R&W systems available using the same hardware.

Finishes



**Satin
stainless steel
CSB**



**Polished
stainless steel
CPB**



**Satin
brass
PMB**



**Polished
brass
PPB**



**BioCote®
antimicrobial
BCB**



**Black Satin
Chromium
NEB**

Platform features



- Completely integrated in the SALTO Systems platform.
- Enables users to have standalone electronic cylinders, standalone electronic locks, standalone electronic glass door locks (SALTO wireless compatible), emergency exit devices (SALTO wireless compatible), locker locks and IP based on-line readers, all in the same system with SALTO Virtual Network capabilities, making it possible to update user card access plans flexibly.



Accessories / GRIPs



- Disability Discrimination Act (DDA) compliant.
- Allows anyone with a disability to open doors.
- BioCote® antimicrobial protection, silver ion technology.



Technical data:



Current required: 1 Lithium standard battery CR2

Number of openings: Up to 40,000 on 1 battery

Environmental conditions: -20°C / 70°C

Certifications: Highest EN certification. IP degree 66*

* Depending on the model. Consult SALTO for further details

SALTO Systems Inc | 3073 McCall Drive - Suite 1 | 30340 Atlanta, GA | USA | Phone: 770-452-6091 | info@salto.us

SALTO Systems Inc | 1847 Perrot Blvd., Ste 400 | Notre-Dame-de-l'Île-Perrot | Canada J7V 7P2 | Phone: 514-616-2586 | info@saltosystems.ca

SALTO Systems | Bonampak 77 Ste. 205 | Q. Roo 77500 | Mexico | Phone: +52 998 892 8752 | info.mexico@salto.us



Salto International

SALTO Systems SPAIN HQ, Olartzun
SALTO Systems UK, Banbury
SALTO Systems GERMANY, Gevelsberg
SALTO Systems FRANCE, Paris
SALTO Systems NETHERLANDS, Amsterdam
SALTO Systems BELGIUM, Brussels
SALTO Systems POLAND, Warsaw
SALTO Systems ITALY, Milan
SALTO Systems DENMARK, Kalundborg
SALTO Systems NORWAY, Oslo

SALTO Systems FINLAND, Helsinki
Ewasalto SWEDEN, Stockholm
SALTO Systems PORTUGAL, Oporto
SALTO Systems USA, Atlanta
SALTO Systems CANADA, Montreal
SALTO Systems MEXICO, Cancun
SALTO Systems AUSTRALIA, Sydney - Melbourne
SALTO Systems MIDDLE EAST, Dubai
SALTO Systems ASIA, Singapore



SALTO Systems reserves the right to modify technical specifications, designs and performance without prior notice. © SALTO SYSTEMS 2013